

Chart pack to council for cooperation on  
macroprudential policy

## Contents

List of charts .....	3
Macro and macro-financial setting.....	5
Swedish macroeconomic setting.....	5
Foreign macroeconomic setting .....	6
Macro-financial setting, banks .....	8
Macro-financial setting, households.....	9
Financial markets.....	11
Financial markets, Sweden.....	11
Financial markets, other countries .....	12
Banking groups .....	13
Income and balance sheet measures .....	13
Funding and liquidity measures .....	15
Insurance companies .....	17

## List of charts

Chart 1: GDP growth, Sweden .....	5
Chart 2: Unemployment, Sweden .....	5
Chart 3: CPI inflation, Sweden.....	5
Chart 4: Repo rate .....	5
Chart 5: Economic Tendency indicator.....	5
Chart 6: Confidence indicators for households .....	5
Chart 7: Purchasing managers' index, Sweden.....	6
Chart 8: New export orders, Sweden .....	6
Chart 9: Economic Sentiment Indicator, Euro area.....	6
Chart 10: Purchasing managers' index, foreign.....	6
Chart 11: GDP growth, different regions.....	6
Chart 12: General government debt.....	6
Chart 13: Government deficit/surplus.....	7
Chart 14: Unit labour cost.....	7
Chart 15: Banks' assets in relation to GDP .....	8
Chart 16: Lending in relation to deposits .....	8
Chart 17: Use of foreign wholesale funding.....	8
Chart 18: Prices for single-family houses and tenant-owned apartments .....	9
Chart 19: Real house prices in Sweden .....	9
Chart 20: Household debt-to-income .....	9
Chart 21: Household debt and post-tax interest expenditure.....	9
Chart 22: Household assets and debts .....	9
Chart 23: Household savings.....	9
Chart 24: Household debt, international comparison.....	10
Chart 25: Credit gap, Sweden .....	10
Chart 26: Swedish stress index .....	11
Chart 27: Systemic risk indicator.....	11
Chart 28: Five-year CDS premiums, Swedish banks.....	11
Chart 29: Indicative breakdown of the risk premium in Sweden.....	11
Chart 30: European stress index .....	12
Chart 31: Five-year CDS premiums for banks.....	12
Chart 32: Five-year CDS premiums for government bonds.....	12
Chart 33: Yields on two-year government bonds.....	12
Chart 34: Indicative breakdown of the risk premium in the euro zone.....	12
Chart 35: Size of central banks' balance sheet compared to GDP .....	12
Chart 36: Profit before loan losses and loan losses .....	13
Chart 37: Credit losses.....	13
Chart 38: Swedish banks' issue volumes.....	13
Chart 39: Swedish banks' costs-to-income ratio.....	13
Chart 40: Return on equity.....	13
Chart 41: CET1 ratio according to Basel III.....	13
Chart 42: CET1 ratio, international comparison .....	14
Chart 43: Adjusted leverage ratio, international comparison.....	14
Chart 44: Basis spread.....	15
Chart 45: Credit curve for Swedish covered bonds (compared to the swap rate).....	15
Chart 46: Swap and covered bond spread .....	15
Chart 47: Cost of borrowing in foreign currency and swap to SEK, compared to borrowing domestically.....	15
Chart 48: TED spread .....	15
Chart 49: Major Swedish banks' issue volumes .....	16

Chart 50: Maturity within a year of Swedish banks' outstanding bonds .....16  
Chart 51: The major banks' average LCR.....16  
Chart 52: The major banks' average NSFR.....16  
Chart 53: Solvency ratio .....17  
Chart 54: Traffic light ratio .....17

# Macro and macro-financial setting

## Swedish macroeconomic setting

Chart 1: GDP growth, Sweden

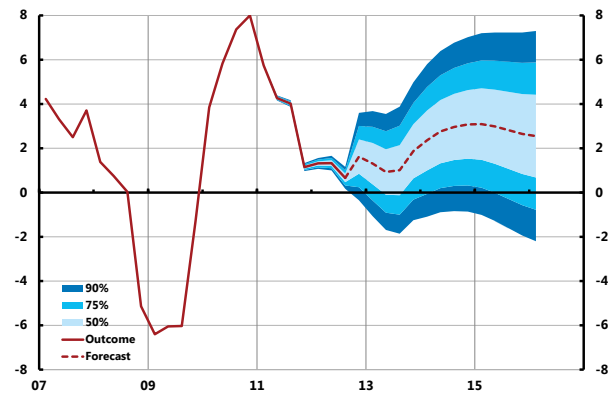


Chart 2: Unemployment, Sweden

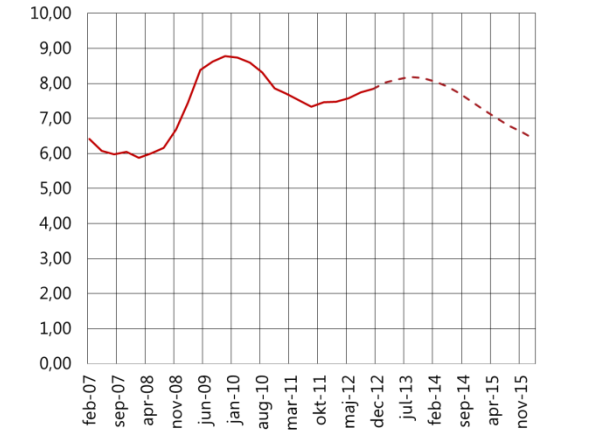


Chart 3: CPI inflation, Sweden

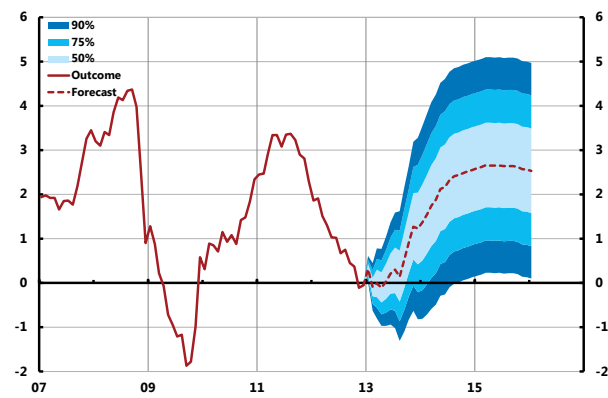


Chart 4: Repo rate

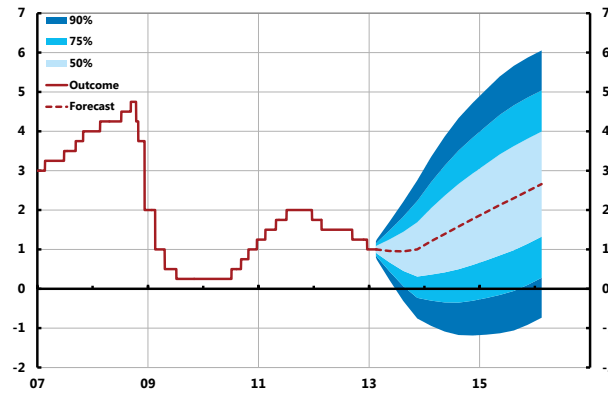


Chart 5: Economic Tendency indicator

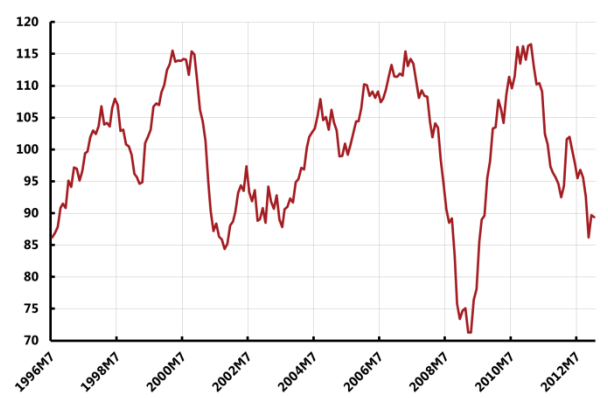
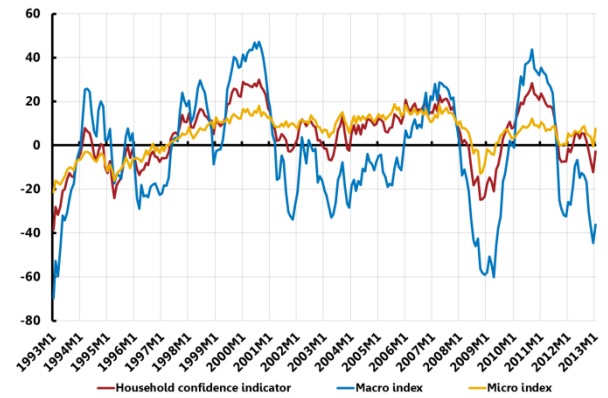


Chart 6: Confidence indicators for households



# Foreign macroeconomic setting

Chart 7: Purchasing managers' index, Sweden



Chart 8: New export orders, Sweden

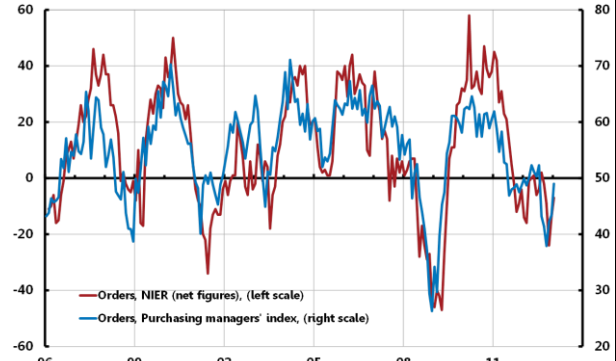


Chart 9: Economic Sentiment Indicator, Euro area

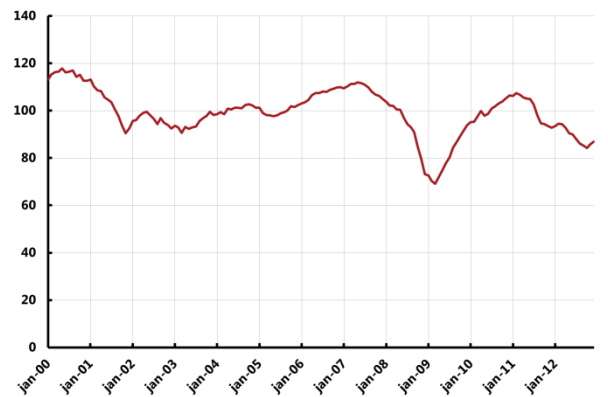


Chart 10: Purchasing managers' index, foreign

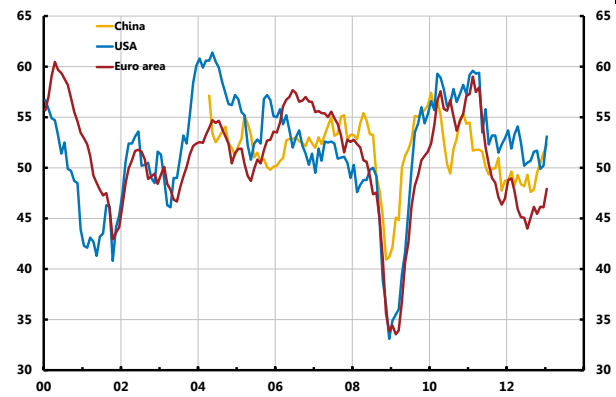


Chart 11: GDP growth, different regions

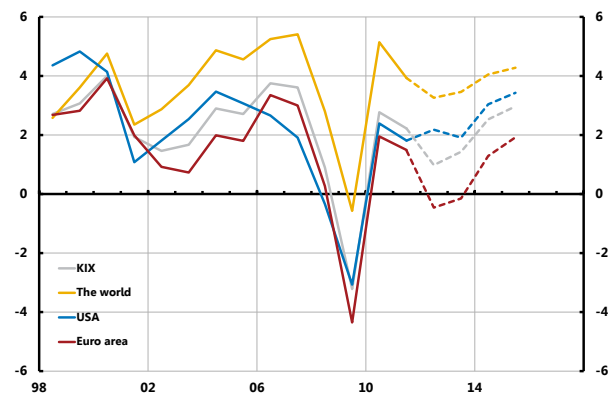


Chart 12: General government debt

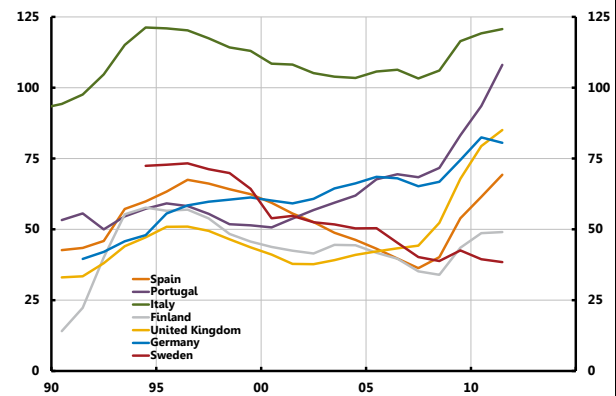


Chart 13: Government deficit/surplus

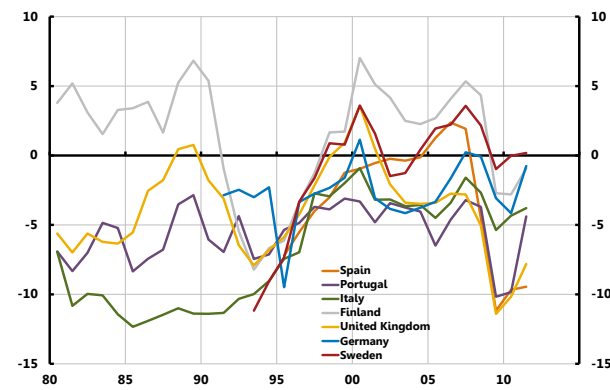
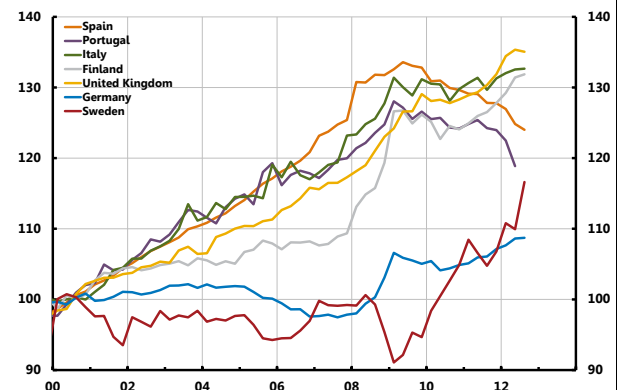


Chart 14: Unit labour cost



## Macro-financial setting, banks

Chart 15: Banks' assets in relation to GDP

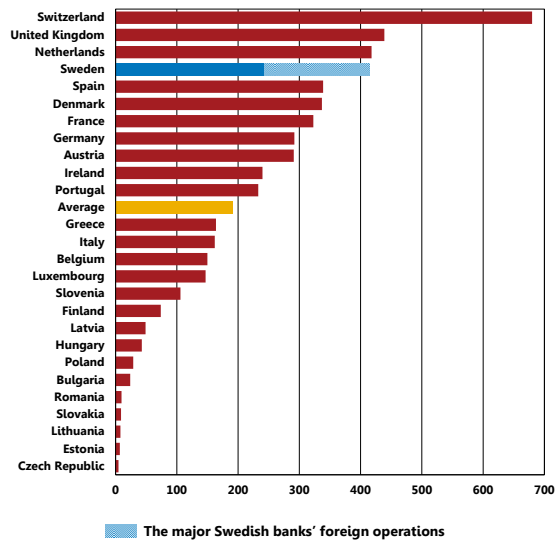


Chart 16: Lending in relation to deposits

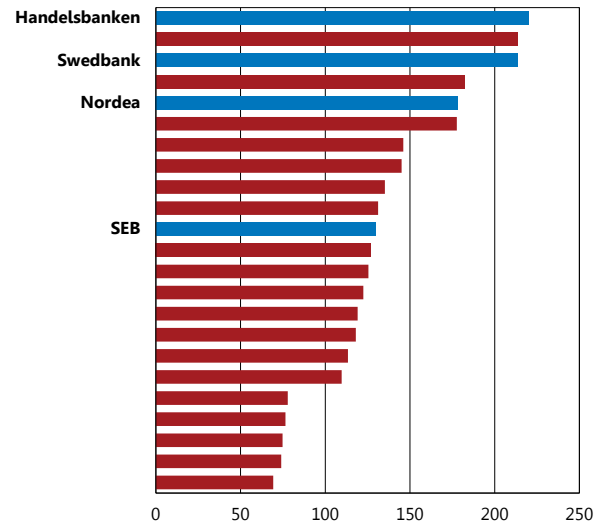
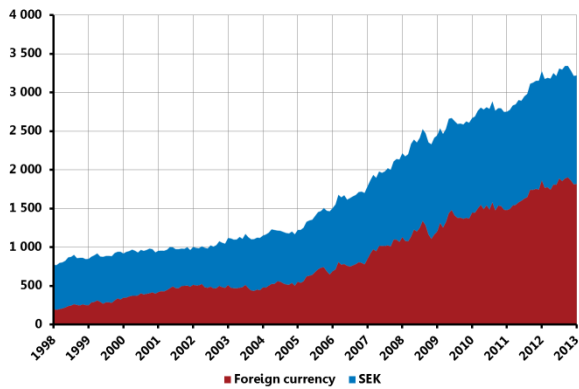


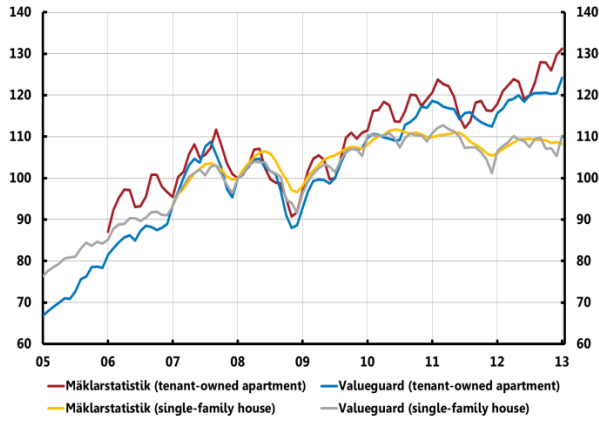
Chart 17: Use of foreign wholesale funding



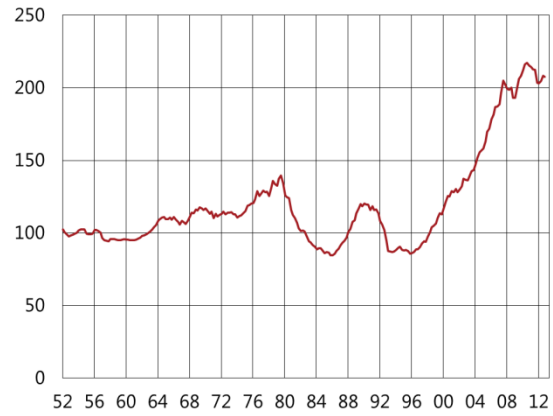


# Macro-financial setting, households

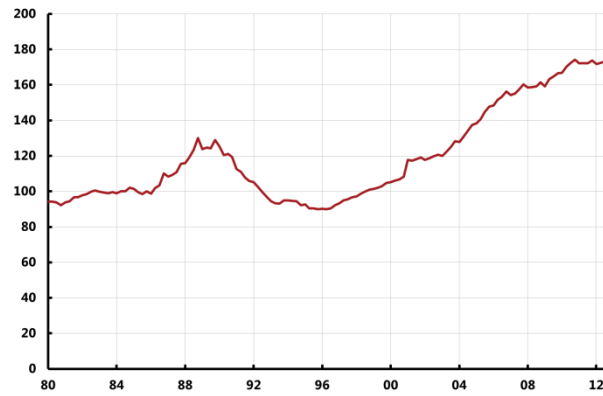
**Chart 18: Prices for single-family houses and tenant-owned apartments**



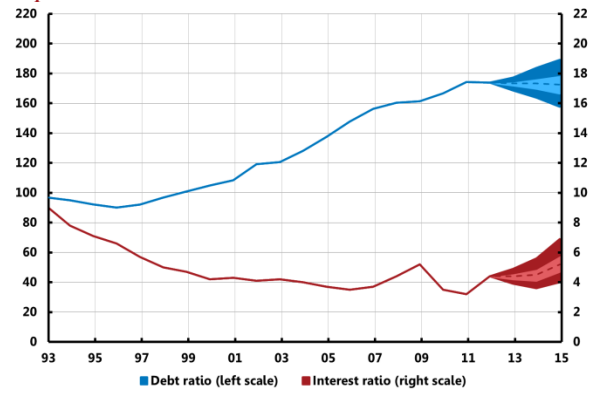
**Chart 19: Real house prices in Sweden**



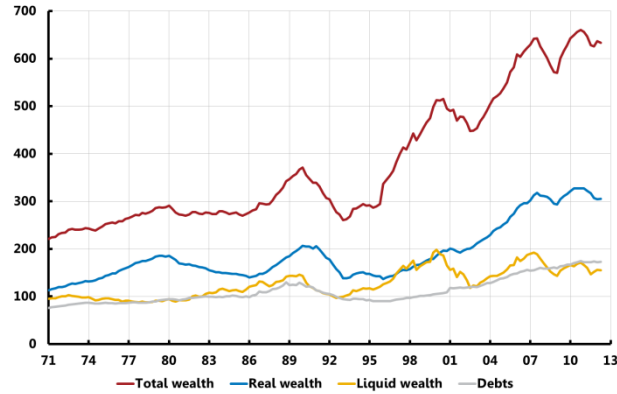
**Chart 20: Household debt-to-income**



**Chart 21: Household debt and post-tax interest expenditure**



**Chart 22: Household assets and debts**



**Chart 23: Household savings**

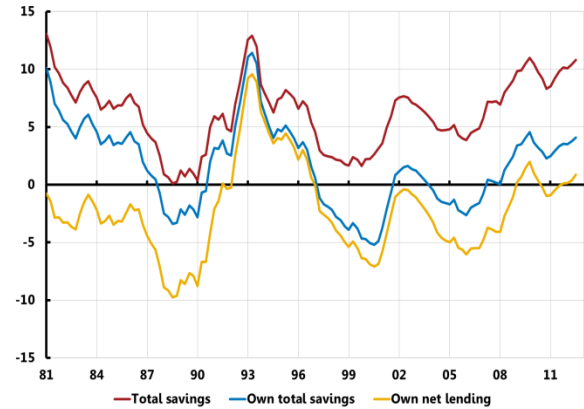


Chart 24: Household debt, international comparison

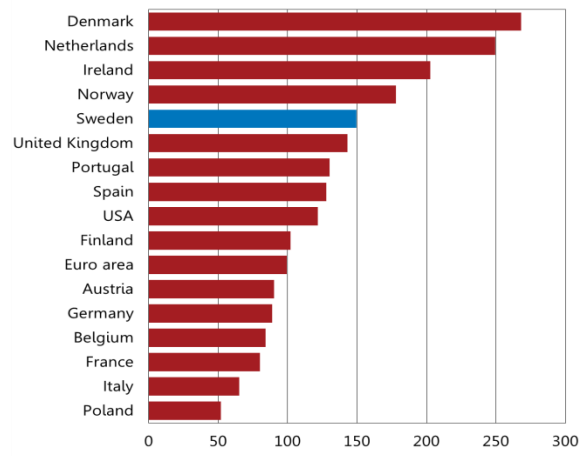
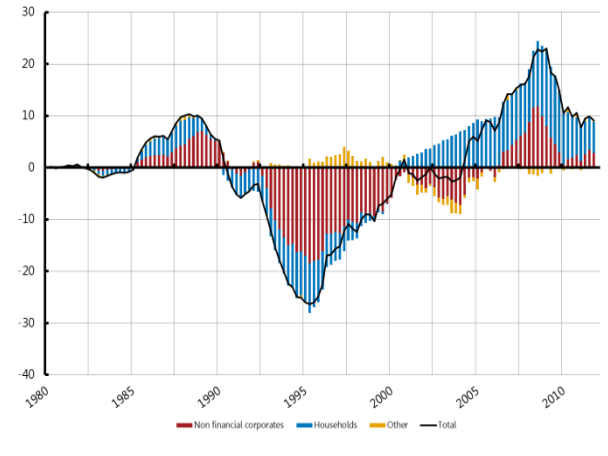


Chart 25: Credit gap, Sweden



# Financial markets

## Financial markets, Sweden

Chart 26: Swedish stress index

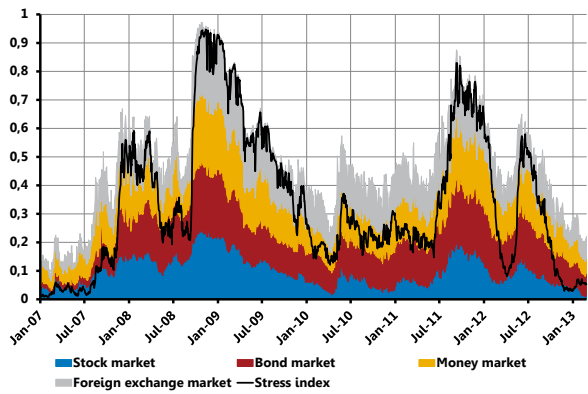


Chart 27: Systemic risk indicator

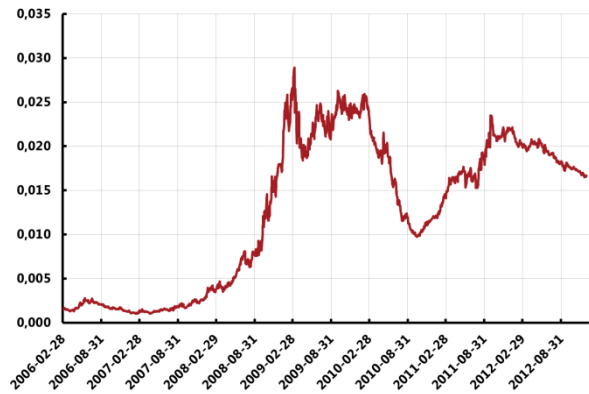


Chart 28: Five-year CDS premiums, Swedish banks

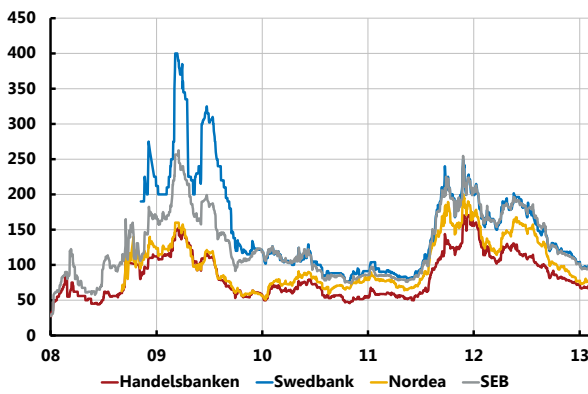
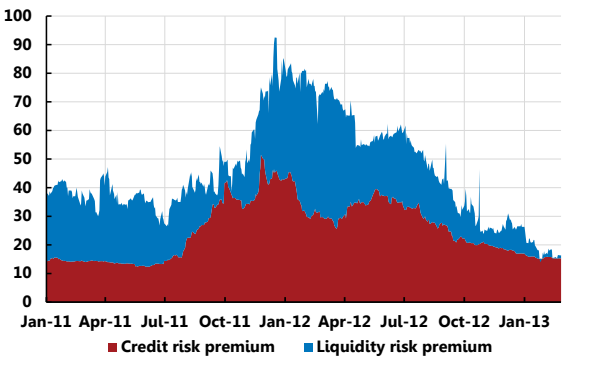


Chart 29: Indicative breakdown of the risk premium in Sweden



## Financial markets, other countries

Chart 30: European stress index

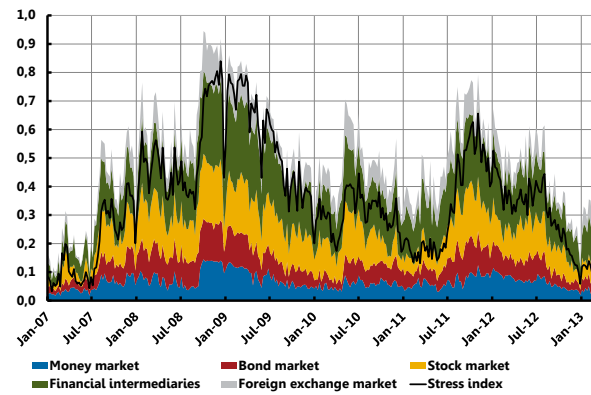


Chart 31: Five-year CDS premiums for banks

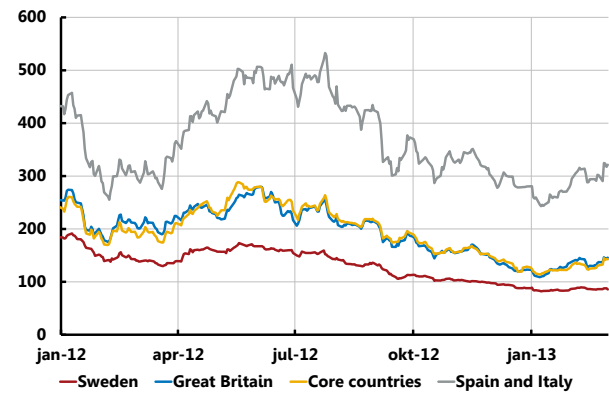


Chart 32: Five-year CDS premiums for government bonds

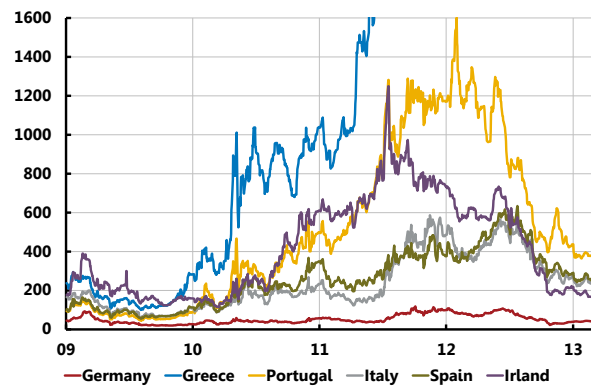


Chart 33: Yields on two-year government bonds

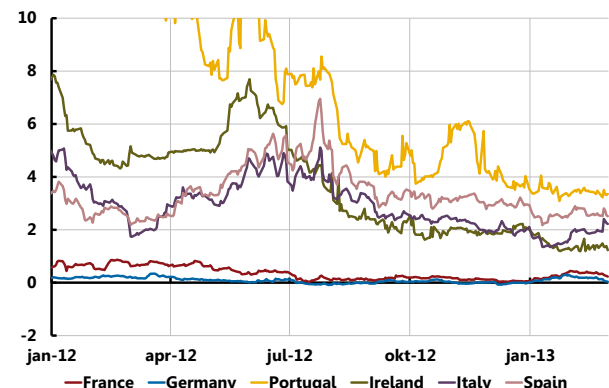


Chart 34: Indicative breakdown of the risk premium in the euro zone

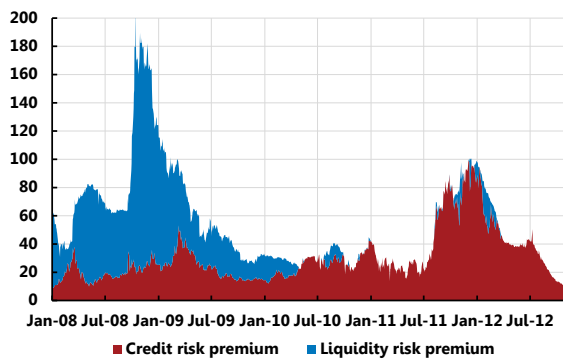
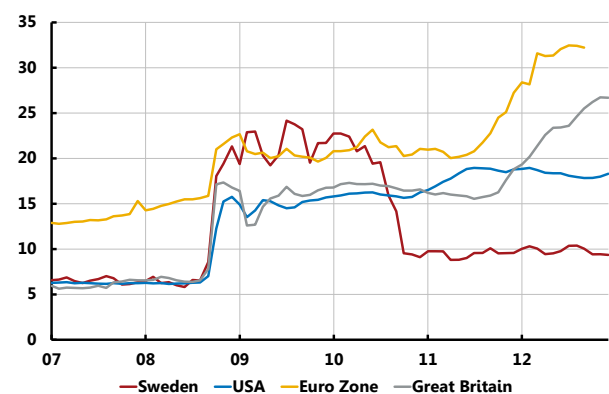


Chart 35: Size of central banks' balance sheet compared to GDP



# Banking groups

## Income and balance sheet measures

Chart 36: Profit before loan losses and loan losses

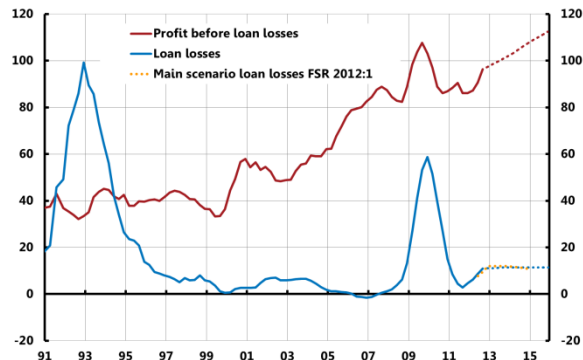


Chart 37: Credit losses

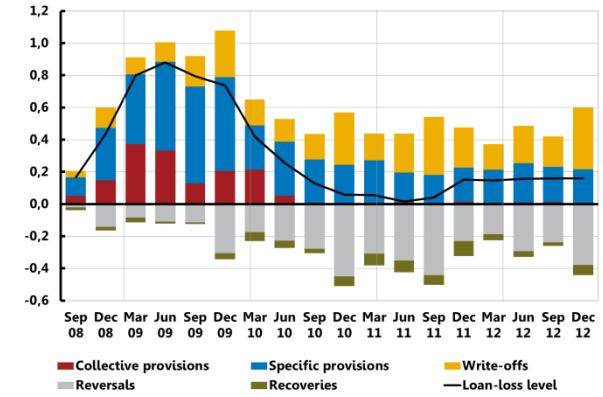


Chart 38: The major banks' income

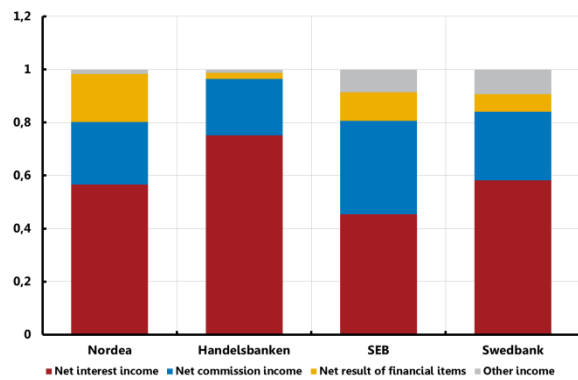


Chart 39: Swedish banks' costs-to-income ratio

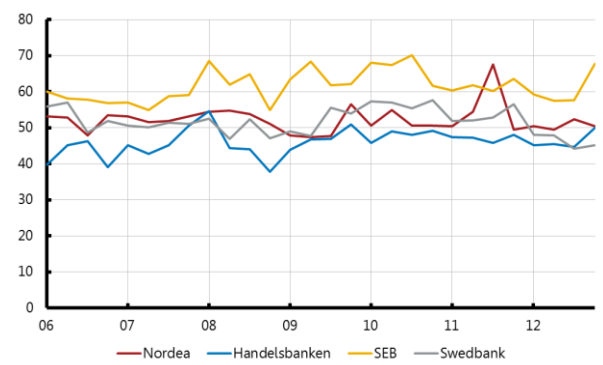


Chart 40: Return on equity

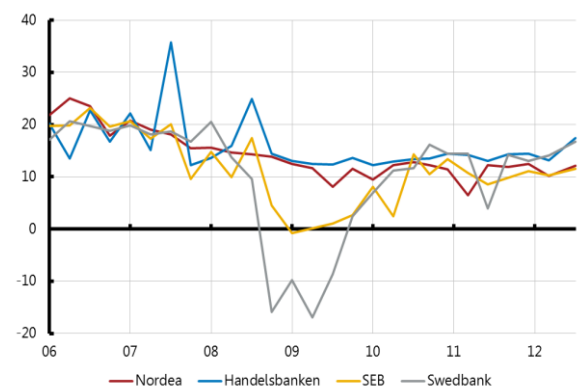
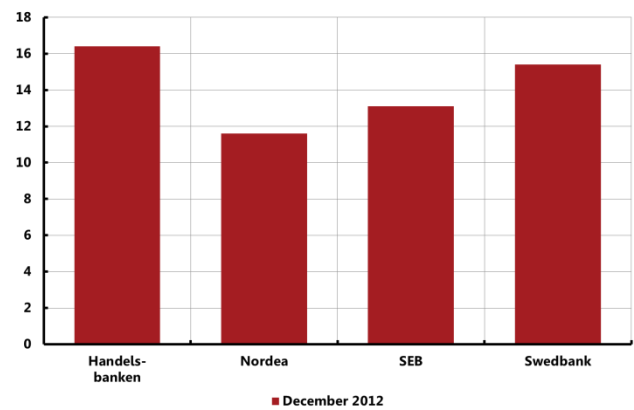


Chart 41: CET1 ratio according to Basel III





# Funding and liquidity measures

Chart 44: Basis spread

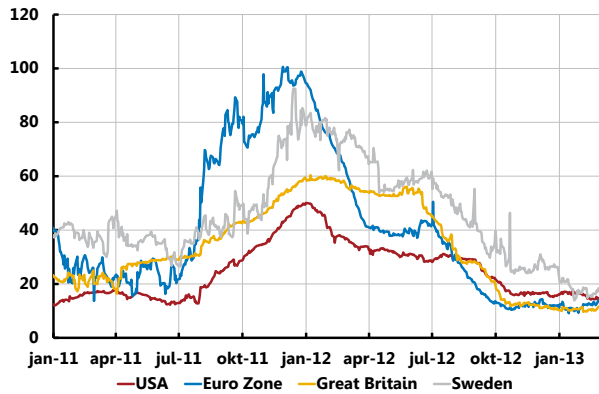


Chart 45: Credit curve for Swedish covered bonds (compared to the swap rate)

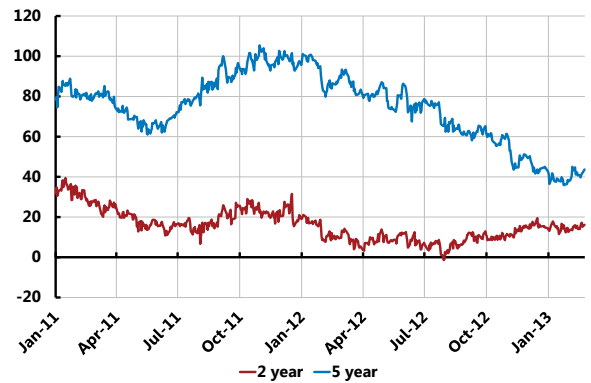


Chart 46: Swap and covered bond spread

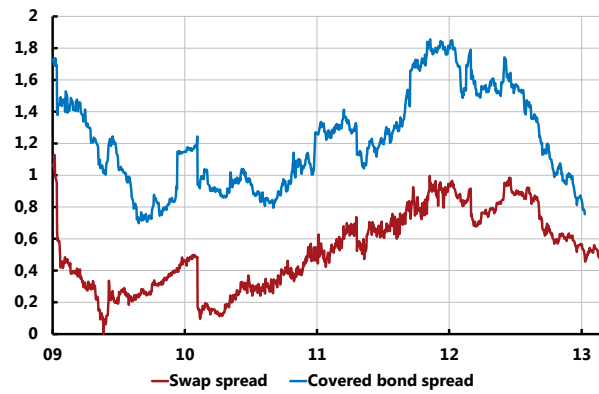
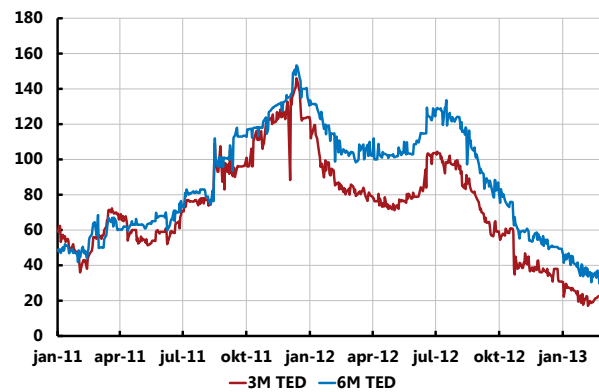


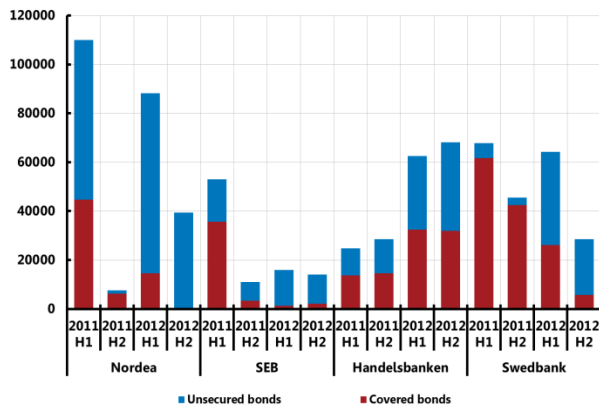
Chart 47: Cost of borrowing in foreign currency and swap to SEK, compared to borrowing domestically



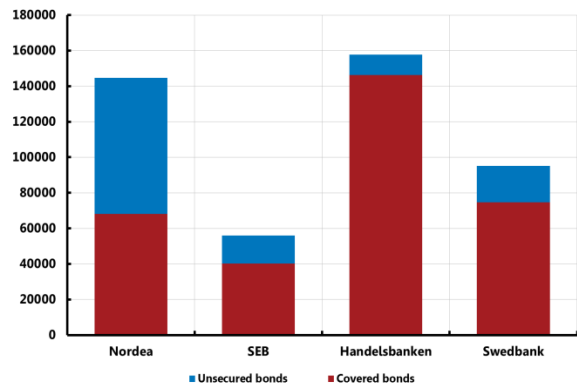
Chart 48: TED spread



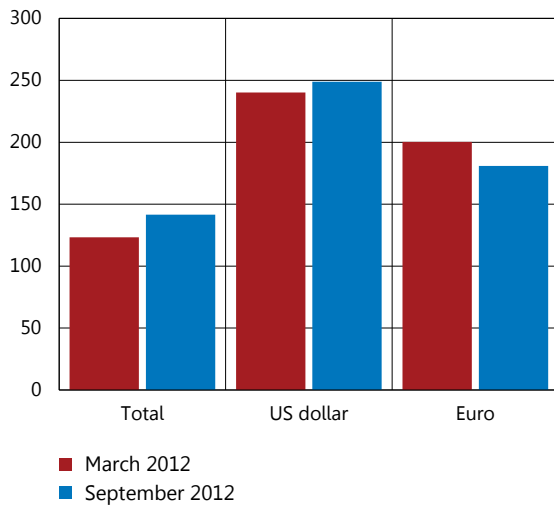
**Chart 49: Major Swedish banks' issue volumes**



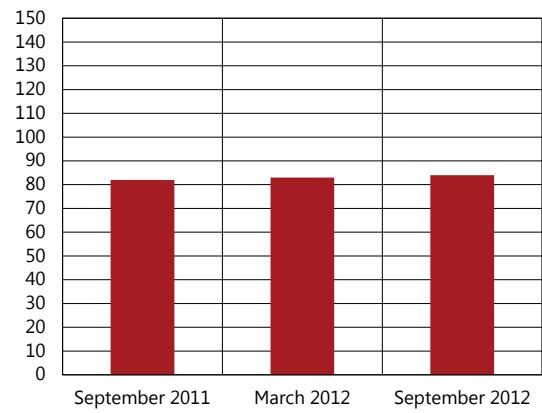
**Chart 50: Maturity within a year of Swedish banks' outstanding bonds**



**Chart 51: The major banks' average LCR**



**Chart 52: The major banks' average NSFR**





# Insurance companies

Chart 53: Solvency ratio

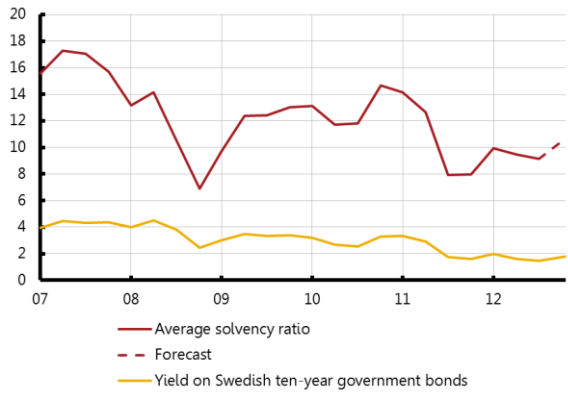


Chart 54: Traffic light ratio

